

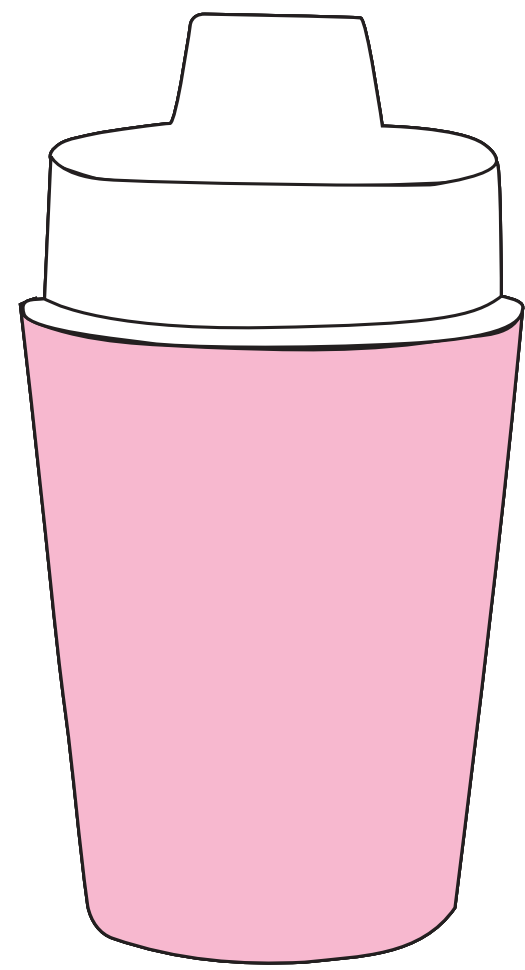
YES N/A

PLEASE DOUBLE CHECK WORDING
 Type had to be reset
 for cleaner imprint
 (original art was not vector)

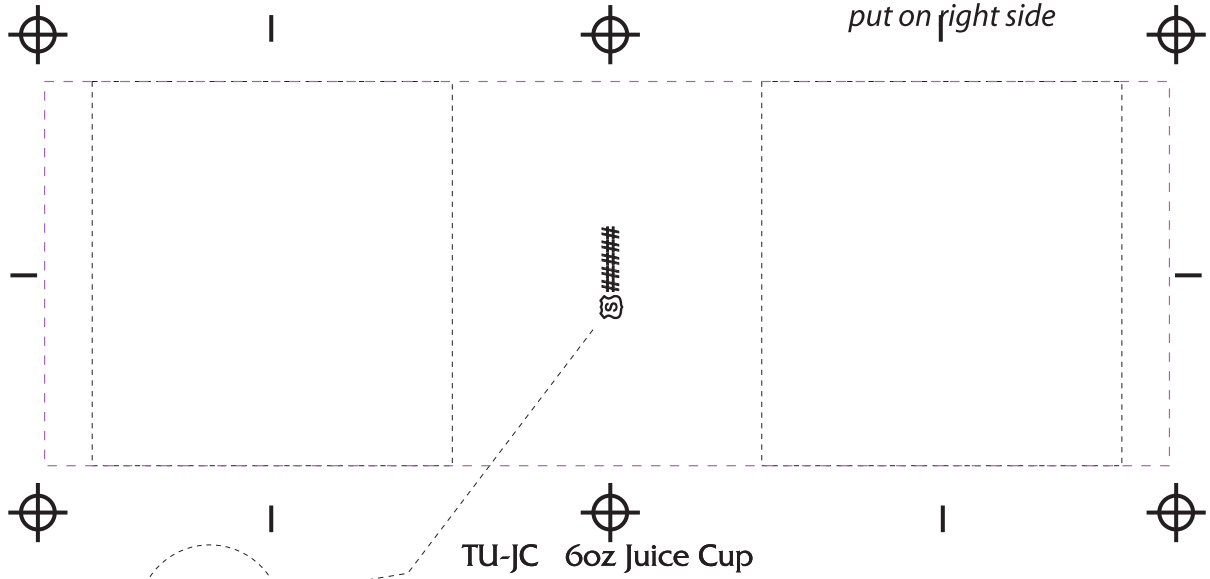
CPSIA tracking #
 can be placed anywhere within
 imprint area and will
 print along with artwork.

Imprint Area
 - - - - - Wrap - 2" tall x 5 7/8" wide
 - - - - - 1 or 2 sided - 2" tall x 1 7/8" wide

Any tight registration
 put on right side



**THIS ORDER WILL NOT BE PROCESSED
 UNTIL THIS PROOF IS RETURNED**
 Printing can take up to 5 days from time we receive signed art approval.



Ⓢ#####
 TU-JC 6oz Juice Cup
 Dotted line shows Imprint area

ART APPROVAL FORM
 Fax Proofs are not true to size due to fax image shrinkage.

Based on CPSIA requirements* printer will include our Safety Shield & each new order # within imprint on all Children's Products for easy tracking.

ATTENTION: This proof is for your protection against inadvertent errors. While every attempt is made to avoid errors or omissions in artwork, final proofing and approval must rest with the customer.

PLEASE REVIEW WITH CARE! Signature below releases printer from any liabilities of typographic or any other proof errors.

Please Check One: O.K. AS IS O.K. w/ CHANGES MAKE CHANGES AND FAX NEW PROOF

Date: _____

Signature: _____ Print: _____

P.O. NO. 0

IMPRINT COLORS 0

PRODUCT COLOR 0 LID White

IMAGE PLACEMENT 1 sides

*CPSIA Section 103(a), generally states all childrens products must be identified in a way to track where and when a product is manufactured.

OE 0 Prod. TU

Art Link	
ART IN	
APP IN	
Proof OUT	
Proof IN	
ART C	
APP C	
Film Print	